

Order no.	Version	Dimensions/DN													
		50	65	80	100	125	150	200	250	300	350	400	450	500	600
<b>3500</b>	<b>Universal Pipe Saddle with female threaded outlet</b>	1"	●	●	●	●	●	●	●	●					
		1¼"	●	●	●	●	●	●	●	●					
		1½"			●	●	●	●	●	●					
		2"			●	●	●	●	●	●	●	●	●	●	●
		2½"					●	●							
		3"					●	●	●	●					
<b>3510</b>	<b>Universal Pipe Saddle with flanged outlet</b>	DN 40			●	●	●	●	●						
		DN 50			●	●	●	●	●	●					
		DN 80					●	●	●	●	●	●	●	●	●
		DN 100					●	●	●	●	●	●	●	●	●
		DN 150										●	●	●	●
<b>3530</b>	<b>Undrilled Saddle</b> (see page F 1/2)		●	●	●	●	●	●	●		●	●	●	●	●

larger sizes on request; surcharge for electrical earthing arrangement

**for DCI, steel and AC pipes**

Please specify pipe material on order  
**up to PN 16**

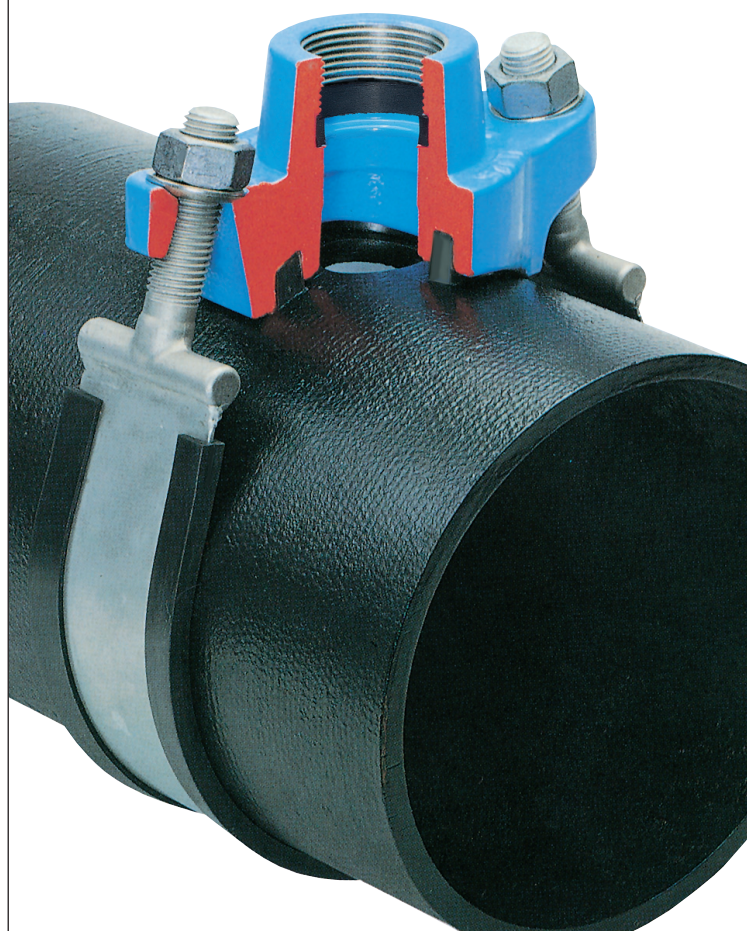
### Design features

- stainless steel rubber insulated strap
- solid epoxy powder coated body
- favourable angle of contact
- flexible wrap around straps for easy installation
- the saddle seal is moulded to fit the pipe diameter and is prefixed in the saddle body
- easily accessible nut on stainless steel dished washer (No. 3500/3530) resp. on stainless steel flat washer (No. 3510)

**No. 3510**  
with flanged outlet



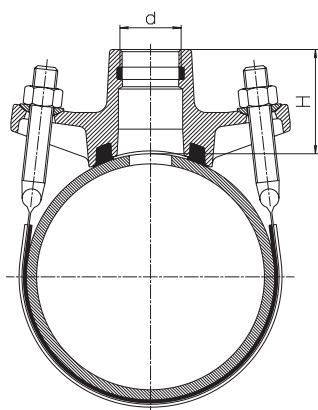
**No. 3500**  
with female thread



# Universal Pipe Saddle, Undrilled Saddle

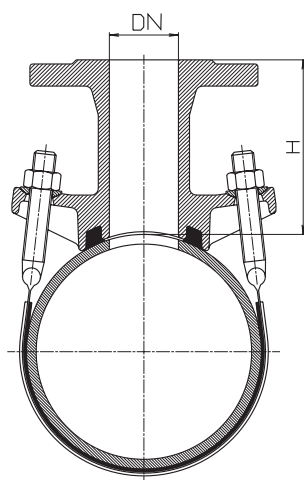
<b>Material</b>		Strap insulation:	elastomer
Saddle body:	ductile iron, epoxy powder coated	Bolts:	M 16 - stainless steel 1.4308 DIN 17006 (G-X6 Cr NiMo 18 10)
Saddle seal:	elastomer, suitable for potable water	Nuts:	DIN 934, rust & acid proof steel 1.4401, DIN 17006 (X5 CrNiMo 18 10) molybdenum coating
Strap:	1.5 mm gauge, stainless steel 1.4571 DIN 17006 (X10 CrNiMoTi 18 10)		

## No. 3500 Universal Pipe Saddle with female threaded outlet DIN 2999 used in conjunction with shut-off adaptor no. 3720 for under pressure drilling



\*Double strap model  
DN 450 - 1000 „Weight” and „H” on request

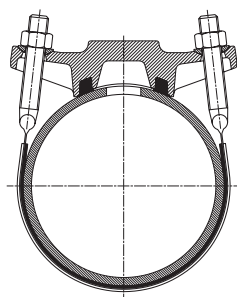
Threaded outlet		Dimensions/DN										
		50	65	80	100	125	150	200	250	300	350	400
1"	Weight	2,30	2,20	2,40	2,50	3,30	3,40	3,90	4,60	4,70		
	H	64	64	61	61	78	78	86	89	89		
1¼"	Weight	2,30	2,20	2,40	2,50	3,40	3,50	4,10	4,60	4,70		
	H	64	64	61	61	78	78	86	89	89		
1½"	Weight			2,40	2,50	3,60	3,60	4,20	4,80	4,90		
	H			57	57	78	78	86	89	89		
2"	Weight			2,45	2,50	3,80	3,90	4,40	5,00	5,10	6,40	6,60
	H			57	57	78	78	86	89	89	74*	74*
2½"	Weight						5,30	5,70				
	H						54*	56*				
3"	Weight						5,40	5,40	5,90	6,00		
	H						54*	56*	56*	56*		



larger sizes dimensions on request

## No. 3510 Universal Pipe Saddle with flanged outlet - DIN 28504 all models have a double strap, flange drilling to DIN 2501 - PN 16

Flanged outlet DN		Dimensions/DN											
		80	100	125	150	200	250	300	350	400	450	500	600
40	Weight	6,60	6,60	6,80	6,90	7,70							
	H	114	114	126	126	145							
50	Weight	6,60	6,60	6,80	6,90	7,70	7,90	8,00					
	H	114	114	126	126	145	153	153					
80	Weight				8,80	10,00	10,40	10,50	11,00	12,20	12,30	12,50	11,80
	H				135	150	147	147	146	146	146	146	146
100	Weight				10,30	10,10	11,60	11,70	12,50	12,70	12,80	12,90	13,30
	H				140	155	158	158	165	165	165	165	165
150	Weight									27,50	28,00	29,00	30,50
	H									186	186	186	186



DN 250 - 600 „Weight” on request

## No. 3530 Undrilled Saddle

ductile iron, epoxy powder coated

suitable for covering of drill holes up to Ø 40 mm

Dimensions / DN	65	80	100	125	150	200
Weight kg	2,60	2,70	2,70	3,50	3,60	4,30